

SM Series Part Numbering



Features

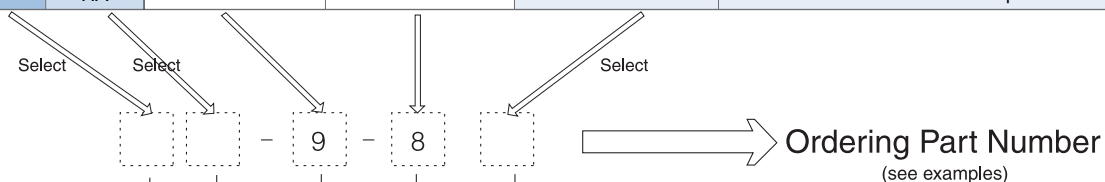
- Miniature circular
- High durability / reliability
- Light weight

Applications

- Professional audio and video
- CCTV system
- Portable wireless radio
- Factory Automation
- Computers and peripherals
- Medical, and much more.

Part Numbering

Product Number		Size	Number of Contacts	Suffix (Contact Type)	Notes
Series	Prefix				
SMP		9	8	P	Plug (Male contact)
				R	Receptacle (Female contact)
	H			P	Plug (Female contact)
				R	Receptacle (Male Contact)
SMS	A				Adapter
	HA				Adapter
				P	Plug (Male contact)
				R	Receptacle (Female contact)
	H			P	Plug (Female contact)
				R	Receptacle (Male Contact)
	A				Adapter
	HA				Adapter



Examples

SMP - 9 - 8 (P)

SMP series - Size 9 Plug - 8 Male contacts

SMS - 9 - 8 (R)

SMS Series - Size 9 Receptacle - 8 Female Contacts

SMSHA - 9 - 8

SMSHA series - Size 9 Adapter - 8 Male Contacts

Connector Series

SMP Series : **Push-pull type**

SMPH - Reverse contact for SMP Series

SMPA - Adapter for SMP Series

SMPHA - Adapter for SMPH Series

SMS Series : **Screw - on type**

SMSH - Reverse contact for SMS Series

SMSA - Adapter for SMS Series

SMSHA - Adapter for SMSH Series

Size

9

No. of Contacts

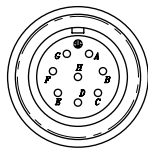
8

Body Type

P : Plug

R : Receptacle

■ Major Performances / Contact Arrangements

Performance	Size/No. of Contacts	Size 9
		8
Withstanding Voltage (Vrms)		700
Rated Current		2A
Rated Voltage (Vrms)		200
Insulation Resistance (Minimum)		1000M Ω or more at DC500V
Contact Resistance (Minimum)		8m Ω
Temperature Range		-25℃ to + 85℃
Contact Arrangement		

¹ Withstanding voltage is the tested voltage value in this table.

² Insulation resistance is measured at DC 100V.

³ Contact resistance is measured at DC 1A.

• Values are from tested items and may not apply to all connectors.

• Specifications subject to change without notice.

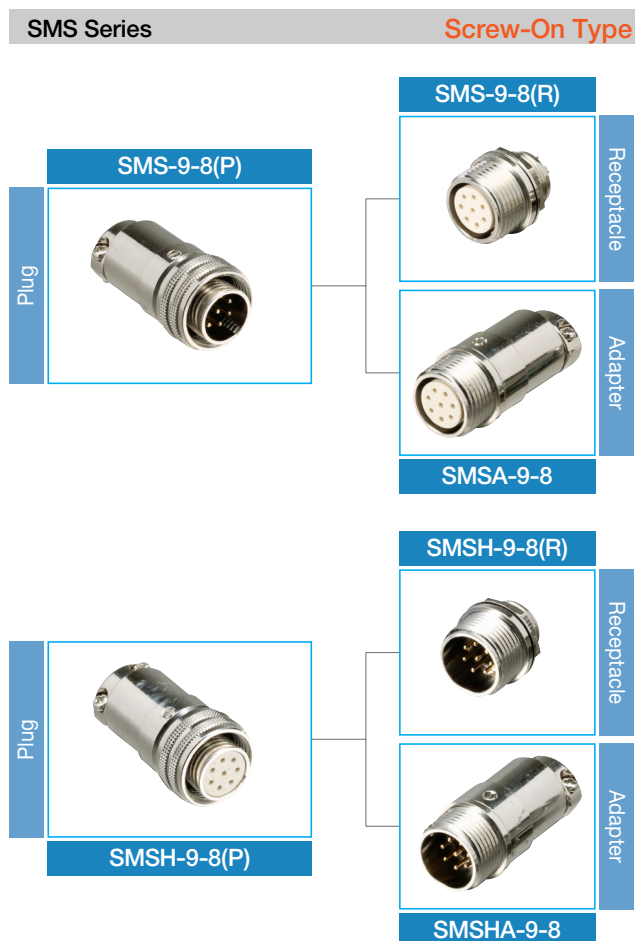
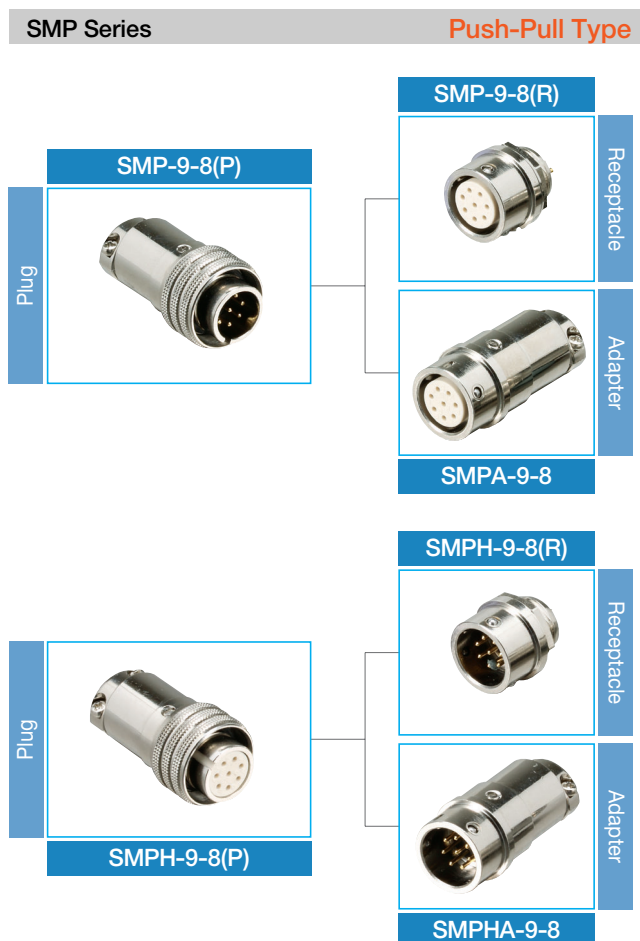
• Consult Sam Woo Electronics for the latest specifications.

⁴ Connector contact arrangement is from mating surface.

■ Material Used / Finish

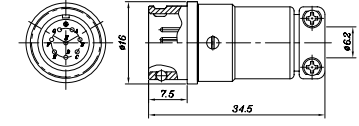
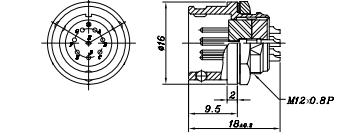
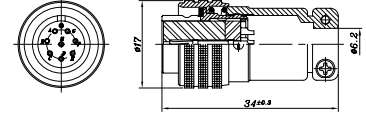
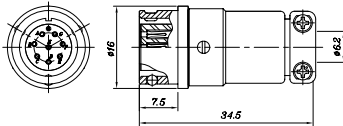
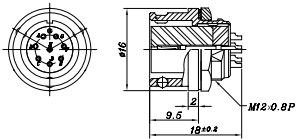
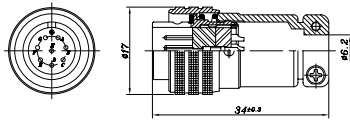
		Material	Finish
Body		Brass	Ni Plating
Insulator		PA	Black, Ivory
Contacts	Male	Brass	Gold Plating
	Female	Phosphor bronze	Gold Plating

■ SM Series Mini-map

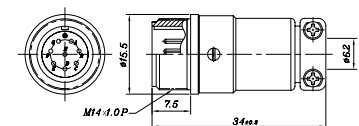
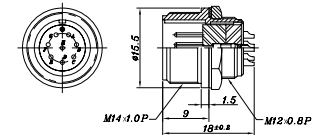
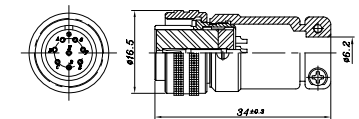
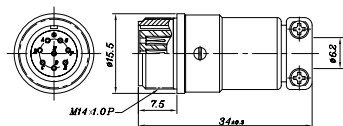
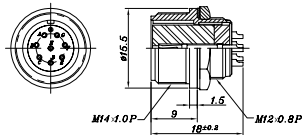
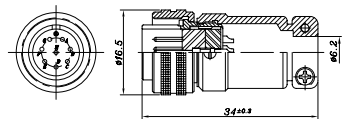


Specifications subject to change without notice. Consult Sam Woo Electronics for the latest specifications.

■ Push-Pull type Male / Female Plug, Receptacle, Adapter

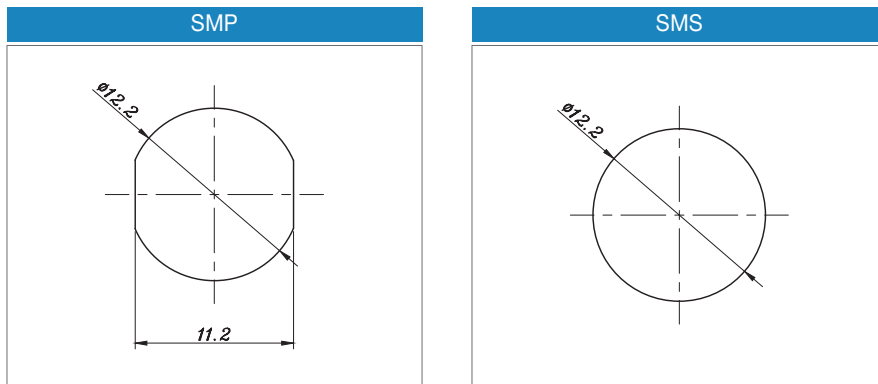


■ Screw-On type Male / Female Plug, Receptacle, Adapter



Specifications subject to change without notice, Consult Sam Woo Electronics for the latest specifications.

■ SM Series Panel Layout





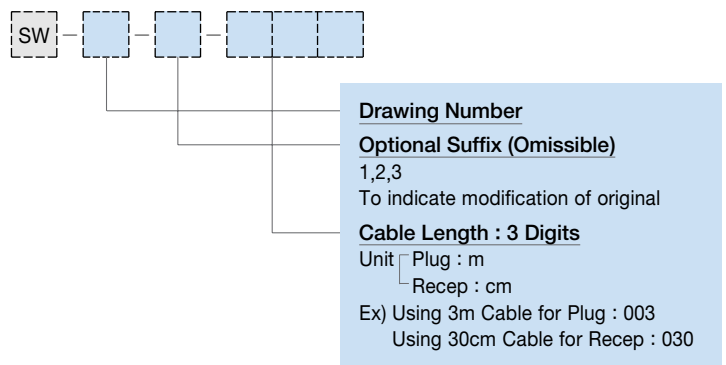
Features

- Miniature circular
- High durability / reliability
- Light weight
- Standard and Custom Design

Applications

- Professional audio and video
- CCTV system
- Portable wireless radio
- Factory Automation
- Computers and peripherals
- Medical, and much more.

Part Numbering



Plug Cable Assembly



Type	Construction
A	SM Connector + Cable + Housing
B	SM Connector + Cable + SM Connector

※ Design and Customization Service Available

Receptacle Cable Assembly



Type	Construction
A	SM Connector + wire + open end
B	SM Connector + wire + Housing
C	SM Connector + wire + Housing with core

※ Design and Customization Service Available

Specifications subject to change without notice, Consult Sam Woo Electronics for the latest specifications.