

D-tap Series D-tap Plug / Jack

■ D-tap



Features

- SW-DTAP-2P
- SW-DTAP-2J
- Standard and Custom Design

Applications

- Power LED Light
- LCD Monitor
- HDV
- Power Supply
- Battery Power

■ Major Performance

No	Item	Standard Data
1	Working Temperature	-25℃ ~ + 85℃
2	Rated Current	10A Max(DC)
3	Test voltage	300V(DC)
4	Contact Resistance	10mΩ (Max)
5	Insulation Resistance	10MΩ , 300V min

■ Cable Assembly Instruction

1. Solder Cable to Banana Pin.

2. Crimp Clip on Cable.

3. Slide Banana Pin and Clip into Corresponding Slots.

4. Close with Top Cover and End Cap.

5. Insert screw through Top Cover and tighten with nut to complete.

SW-DTAP-2P

■ Cable Assembly Instruction

1. Solder the cable to the Female pin.

2. Insulator에 Female Pin 삽입. Slide Female Pin in to Insulator.

3. Bottom Cover에 Insulator를 Slot에 삽입. Slide Insulator into slot.

4. Top Cover 결합. Close with the Top Cover.

5. Insert the screw through the Top Cover and tighten with nut to complete.

SW-DTAP-2J

Specifications subject to change without notice. Consult Sam Woo Electronics for the latest specifications.



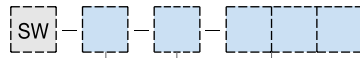
Features

- SW-DTAP-2P
- SW-DTAP-2J
- Standard and Custom Design

Applications

- Power LED Light
- LCD Monitor
- HDV
- Power Supply
- Battery Power

Part Numbering



Drawing Number

Optional Suffix (Omissible)

1,2,3

To indicate modification of original

Cable Length : 3 Digits

Unit Plug : m

Recep : cm

Ex) Using 3m Cable for Plug : 003

Using 30cm Cable for Recep : 030

Cable Assembly



Type	Construction
A	D-tap + Cable + Other Connector

※ Design and Customization Service Available

POWER PIN Series



Features

- POWER PIN(Ni / Au)-2,1
- POWER PIN(Ni / Au)-4,0

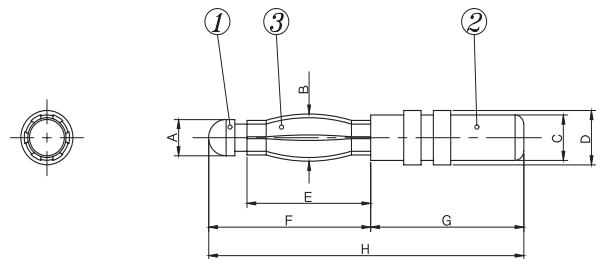
Applications

- Power supply
- Battery power

Material

No.	Components	Material	Finish
①	PIN(A)	Brass	Ni or Au Plating
②	PIN(B)	Brass	Ni or Au Plating
③	Tension Plate	Brass	Ni or Au Plating

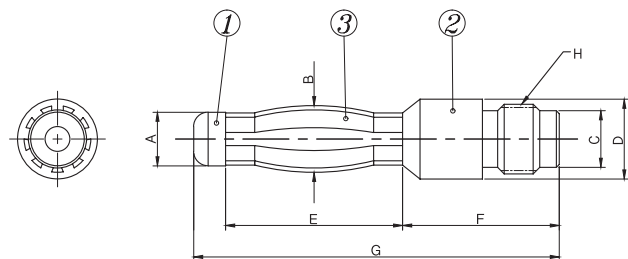
POWER PIN (Ni / Au) - 2,1



Unit : mm

øA	øB	øC	øD	E	F	G	H
2	2,6	2,5	3	7,1	9,3	8,9	18,1

POWER PIN (Ni / Au) - 4,0



Unit : mm

øA	øB	øC	øD	E	F	G	H
3,7	4,6	3,9	5,5	12,2	10,8	25,2	M5×0,8P

Specifications subject to change without notice. Consult Sam Woo Electronics for the latest specifications.